

New York State Percussion Circuit

Liverpool

Saturday, February 17, 2024

Show Begins: 1:00pm
Doors Open: 12:00pm
Location: Liverpool High School
4338 Wetzels Road
Liverpool, NY 13090

Tickets: General admission tickets are available at the door for \$8.00 each. There is no limit on spectator seating at this time. As each ensemble arrives, all members of participating ensembles will have their hands stamped. The staff and equipment crew will need to show their current NYSPC passes for entrance. Additional parents and chaperones will need to pay for admission to the contest.

Show Day Emergency Contacts:

Sean Barry (203) 209-6718

Elizabeth Patino (315) 876-0011

Pre-performance Announcements: All announcements should be completed via the survey provided. We will supply extra forms of the NYSPC Announcer Template if needed.

Registration: A representative from each ensemble will need to register their group at the student/equipment drop off entrance. Each ensemble will receive:

- Final Performance, Warm-Up, and Report/Staging Times
- Homeroom and Warm-up Area Assignments
- Room Contracts
- School and Gymnasium Maps

Homerooms: Each group will have two classrooms for storage of equipment. Large timpani and marimbas will not fit into the classrooms.

Warm-up areas: There are 4 warm-up areas labeled A, B, C and D. Each performing ensemble will have 40 minutes of warm-up time in a large room.

Concessions: A variety of hot and cold items will be for sale in the cafeteria. The concession area will open at 11:00am and will remain open throughout the show. We ask that all food and drink do not enter the gymnasium or the warm-up areas.

Buses & Trucks are to follow the signs to their designed drop-off, loading, and parking areas. There will be plenty of volunteers ready to assist you.

Equipment: All equipment must enter the gym before you perform and is to be removed from the gym after your performance. There will be a concert bass drum, chimes and 4 timpani available upon request. Please make arrangements with Jason Schirripa 315-395-3104. Please call well in advance so arrangements can be made.

Equipment/Prop Storage: 500's Hallway near hallway leading to warm-up and performance spaces. Areas will be labeled for each performing group.

Timing Line: Maximum performance area is 63' X 100'. Timeline is horizontal, back to front. Entry gym from Rear Side 1, Exit gym Front Side 2. See map.

Post Contest Critique: Critique will take place in the media Center/library, 15 minutes following the last performance. The Instructional Staff for each competing ensemble will have 4 minutes to speak with each judge following the awards ceremony.

Retreat: Captains retreat only.

Liverpool

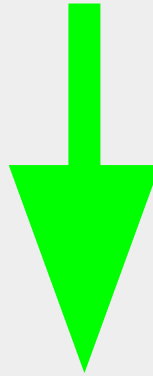
February 17, 2024

Show Order	Class	Home Room Assignment	Pick-Up Time (10 min)	Warm Up Time (40 min)	Warm Up Room	Transfer Time (5 min)	Staging Time (5 min)	Performance Time
NATIONAL ANTHEM AND INTRODUCTION OF JUDGES								12:55 PM
Victor Indoor Percussion	PSA	See Map	12:00 PM	12:10 PM	Warmup A	12:50 PM	12:55 PM	1:00 PM
Cicero-North Syracuse	PSA	See Map	12:10 PM	12:20 PM	Warmup B	1:00 PM	1:05 PM	1:10 PM
Central Square HS Winter Drumline	PSA	See Map	12:20 PM	12:30 PM	Warmup C	1:10 PM	1:15 PM	1:20 PM
Liverpool HS	PSA	See Map	12:30 PM	12:40 PM	Warmup D	1:20 PM	1:25 PM	1:30 PM
Hilton HS Percussion	PSA	See Map	12:40 PM	12:50 PM	Warmup A	1:30 PM	1:35 PM	1:40 PM
INTERMISSION								1:50 PM
New Hartford Indoor Percussion	PSA	See Map	1:05 PM	1:15 PM	Warmup B	1:55 PM	2:00 PM	2:05 PM
Webster Percussion Theater	PSA	See Map	1:15 PM	1:25 PM	Warmup C	2:05 PM	2:10 PM	2:15 PM
Eastridge Indoor Percussion	PSA	See Map	1:25 PM	1:35 PM	Warmup D	2:15 PM	2:20 PM	2:25 PM
Greece	PSA	See Map	1:35 PM	1:45 PM	Warmup A	2:25 PM	2:30 PM	2:35 PM
East Syracuse Minoa	PSA	See Map	1:45 PM	1:55 PM	Warmup B	2:35 PM	2:40 PM	2:45 PM
Jordan Elbridge	PSA	See Map	1:55 PM	2:05 PM	Warmup C	2:45 PM	2:50 PM	2:55 PM
AWARDS - Captains Only							3:15 PM	3:20 PM

Liverpool Performance Area

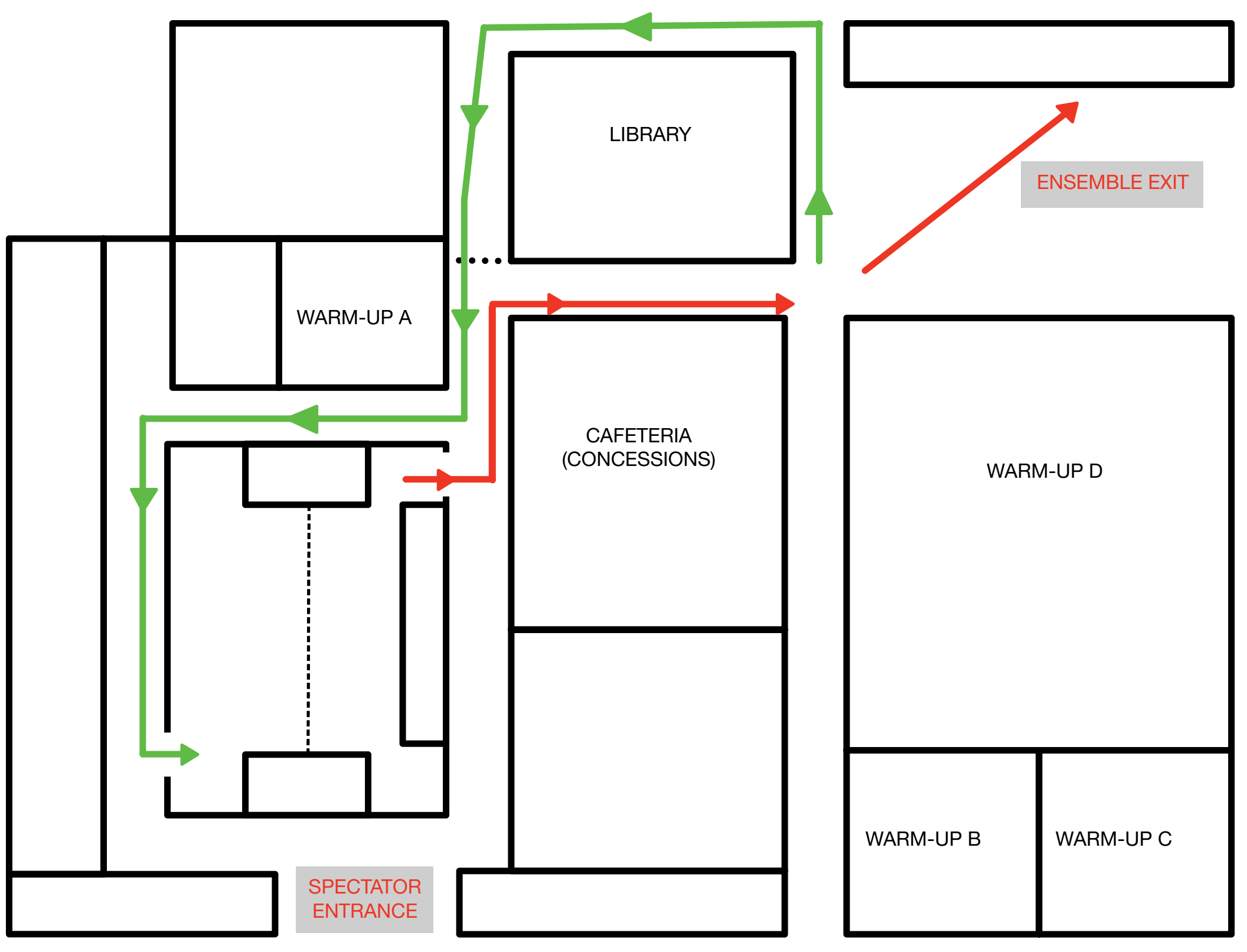
100

Ensemble
Entrance



Ensemble
Exit

63



SPECTATOR
ENTRANCE

LIBRARY

WARM-UP A

CAFETERIA
(CONCESSIONS)

ENSEMBLE EXIT

WARM-UP D

WARM-UP B

WARM-UP C